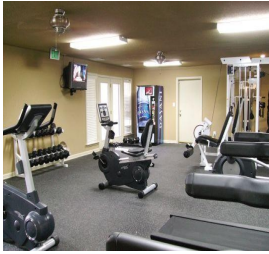
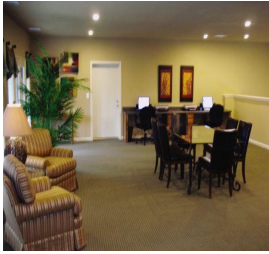


## Clubhouse



## Residents Apartments



### Board of Directors

#### *FOCUS Founder*

Lulu Richardson

#### *President*

Laura Hinton

#### *Vice-President*

Carol J. Pinkerton

#### *Treasurer*

Margaret Thomas

#### *Secretary*

Doreen G. Oyadomari, Ph.D

#### *Immediate Past President*

Jerome Williams, DVM

Gwendolyn Boyd, M.D.

Dow Briggs, M.D.

Mittie D. Cannon, M.ED., B.S.

Joy S. Jennings

Tom L. Larkin

Lisa Sharp

Stephanie Stallings

#### *Auxiliary Board*

Renee Cashman

Cindy Formanek Kirk, Ph.D.

Keecha Harris, DrPH, RD

Kimberly Kay

Carrie Phillips

Jim Rikard

Roxanne Shuler

Cheryl W. Simonetti

Gregory E. Skipper, M.D.

Marion F. Walker

Katherine Jebeles Wiles



*A residence for women in early recovery  
from alcohol and drug addiction*

Established in 2001 and located in Hoover, Alabama, our apartment community provides a safe haven during the crucial transitional period between primary treatment and returning home or establishing a new home.

---

2209 B Little Valley Road

Hoover, AL 35216

(205) 822-7300

[www.focus-on-recovery.org](http://www.focus-on-recovery.org)



*FOCUS On Recovery* is a 501(c)(3) public charity funded through donations from individuals, corporations, churches, foundations and fundraisers as well as tuition paid by the participants. To apply for enrollment, potential participants are invited to call the office at (205) 822-7300.

## Resident Profile

- Has completed a primary treatment program for alcohol or drug addiction or currently involved in Intensive-Out-Patient or Partial-Hospitalization Program for the Pre-level one placement.
- Age 21 or older
- Has the ability to function in a community setting
- Has no current history of violence or violent criminal charges pending
- Has no severe medical problems that would interfere with participation at FOCUS
- If dual diagnosis and medications are involved, must be able to take medications responsibly and maintain contact with current physician as scheduled.

**While living at FOCUS, residents are required to apply recovery tools as a framework for their lives. Upon admission to FOCUS each resident agrees to the following rules, regulations and requirements:**

- Help insure a clean, safe, secure, predictable, friendly, drug and alcohol free environment conducive to recovery.
- Employed, volunteer or enrolled in school at least 20 hours per week.
- Attend in-house community meetings, accountability groups, workshop groups and twelve-step literature study groups.
- Submit to random drug and alcohol screens.
- Be honest and open to change as is necessary for personal recovery.
- Attend a twelve-step meeting daily
- Begin working the twelve steps of recovery with a sponsor within the first 30 days of admission.
- Active Participation in a twelve-step home group.
- Build a recovery support network.
- Follow all rules, regulations and requirements outlined in the residents handbook.

## Facility

FOCUS on Recovery currently provides sober living for women in the Hoover, Alabama area. Each apartment is newly remodeled and fully furnished. Amenities include state of the art fitness center, cyber café, swimming pool and business center. FOCUS is conveniently located near shops and bus lines. Cultural, recreational and employment opportunities are available, many within walking distance.

## Initial Fee

Residents are required to pay prior to or upon admission \$950 which represents:

Admissions Fee, Orientation, 1st Four Weeks Housing, Power, Water, Sewage, Cable, Access to Fitness Center, Access to Cyber Café, Access to Swimming Pool, 12-Step Overview Seminar, 12-Step Literature Study Group, Community Meetings, and Accountability Groups. After the four weeks rent is \$150 per week.

## Staff

Phyllis Wyne  
*Executive Director*

Rachel Bearden  
*Program Manager*

Karla Stamps  
*Office Manager*

Lindsey Owens  
*Resident Assistant*  
*Office Program Assistant*

Latoyna Preyer  
*Resident Assistant*

*If you have any questions or would like further information please visit our website at [www.focus-on-recovery.org](http://www.focus-on-recovery.org) or contact our office at 205-822-7300*



2209 B Little Valley Road  
Hoover, AL 35216  
(205) 822-7300

### Donations

\_\_\_\_\_  
Name

\_\_\_\_\_  
Address

\_\_\_\_\_  
City State Zip

\_\_\_\_\_  
Home Phone Work Phone Cell Phone

\_\_\_\_\_  
Email

### Sponsorship Opportunities

Open the Door \$150 (one woman, one week)

Light the Path \$600 (one woman, one month)

Pave the Way \$1,800 (one woman, 1/2 program)

Road to the Future \$3,600 (one woman full program)

The Bridge to Recovery \$5,000

Our Pledge \$ \_\_\_\_\_

Amount Enclosed \$ \_\_\_\_\_

Please bill me for the balance

Monthly  Quarterly  Semi-annually

### Methods of Payment

Credit Card

Card Type: \_\_\_\_\_ Exp. Date: \_\_\_\_\_

Card Number: \_\_\_\_\_

Check

Make payable to:  
FOCUS On Recovery

My gift in memory/honor of:

\_\_\_\_\_